



## American Chemical Society Wichita Section

**November 2012 Newsletter**

Stephen Donnelly, Editor

**Section Meeting**  
**Thursday, 15 November, 6:00 PM**  
**Exploration Place**  
**Wichita, Kansas**

**Meal (optional):** approximately 6:30 PM

We will have an informal pizza party after a tour of the Exploration Place exhibits and the "Kick it With Chemistry" show.

**Meeting and Tour:** 6:00 PM

Our group will have access to the exhibits in Exploration Place between 5:00 PM and 6:00 PM. The facility closes to the public at 5:00 PM, but the section has rented the facility for our use. The "Kick it With Chemistry" program will start at 6:00 PM with dinner to follow soon after. Pizza will be delivered from Picasso's Pizza in Wichita. The cost of the event is \$5.00 per person. Members are encouraged to bring along guests including children!

Please RSVP (tour only, pizza only, or both) to Dr. Jung Oh at [jroh@k-state.edu](mailto:jroh@k-state.edu) by 13 November. Please note any dietary restrictions - we will try to accommodate them if possible.

\*\*\*\*\*

### Chair's Message

Dear Section Members:

As my term as chair nears its end, I want to thank many of you who shared your time and energy for section activities by working on newsletter, updating web page, coordinating Olympiad, hosting the meeting, attending a meeting, and/or nominating a student for memberships and awards - Thanks!

Our section executive committee members had a meeting to plan next year activities in September - Thanks to committee members! If you have sugges-

tions to the executive committee, please share with us!

Our September industry visit with OxyChem Wichita plant tour was successful with presentation before the tour and presentation at the site. During October 21-27, I know that many of you celebrated National Chemistry Week (NCW), "Nanotechnology-The Smallest BIG idea in Science". I would appreciate receiving a short description how you celebrated.

I hope many of you join us our special meeting with fun exploration at Science Exploration at Wichita and participate in 2012 section office election.

It has been wonderful year to serve as a chair - I am grateful. I wish each of you happy and healthy rest of 2012!

Respectfully submitted,  
Jung Oh, Chair, ACS Wichita Section

\*\*\*\*\*

### Editor's Note

National elections are over, but our local section's race is just warming up. While we expect that media attention will not be as in depth as that for the presidential campaigns, and section campaign spending will be only a fraction of what was spent over the past few months, we expect the battles to be just as vigorously fought.

Actually there is only one candidate and he is running unopposed. I was Chair-elect this year and will become Chair on 1 January. Eric Trump, who volunteered to take over the Secretary position when Janice Crowley resigned earlier in the year, will become Chair-elect.

Dr. Norman Schmidt, Chemistry Professor at Tabor College, volunteered and was nominated by the Executive committee to run for Secretary (and thereby start the progression through the leadership ranks). Norman was born and raised in Wichita. He received BS degrees in both chemistry and physics from Bethel College in 1984, and his PhD from the University of South Carolina in 1989. He spent the last 21 years at Georgia Southern University before returning to Kansas and his current position. I lifted Norman's biographical information from the Tabor College website ([www.tabor.edu](http://www.tabor.edu)).

The ballot will accompany this newsletter. All three positions will be listed with a provision for write-in candidates, and I certainly welcome anyone who is interested in the Chair position to write-in their name- it is a high power position with great

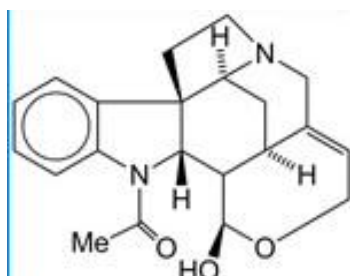
pay and benefits. Please fill out the ballot and return it via email or snail mail to Jung by 16 November.

Sincerely,

Stephen Donnelly

\*\*\*\*\*

### Molecule of the Week



**diaboline**

The molecule of the week is diaboline, a curare alkaloid extracted from the flowering plant *Strychnos diabolii* by H. King in 1949. It was synthesized in 2002 by M. Shibasaki and co-workers in conjunction with their total synthesis of structurally similar strychnine<sup>1</sup>. Diaboline is a glycine receptor antagonist and, like strychnine, is a convulsant.

<sup>1</sup> **Enantioselective Total Synthesis of (-)-Strychnine Using the Catalytic Asymmetric Michael Reaction and Tandem Cyclization**, Pietro Takashi Ohshima, *et al*, *J. Am. Chem. Soc.*, **2002**, *124* (49), pp 14546–14547

\*\*\*\*\*

### There's an app for that...

For ACS Local Section members on the go - get the mobile web app for iPhone & Android to get the most relevant news: upcoming grant deadlines, scholarship and award information, news from your committee and more!

Find it by scanning the following QR code or go to the "Local Sections" tab at ACS.org.



\*\*\*\*\*

### Wichita Section Web Site:

<http://wichita.sites.acs.org/>

### 2012 Section Officers

#### Jung Oh, *Chair*

Department of Arts, Science, and Business  
Kansas State University at Salina  
Salina, KS 67401  
785-826-2915  
[jroh@sal.ksu.edu](mailto:jroh@sal.ksu.edu)

#### Stephen Donnelly, *Chair Elect*

Fort Hays State University  
[sdonnell@fhsu.edu](mailto:sdonnell@fhsu.edu)

#### Eric Trump, *Secretary*

Emporia State University  
[etrump@emporia.edu](mailto:etrump@emporia.edu)

#### Malonne Davies, *Treasurer*

Emporia State University  
[mdavies@emporia.edu](mailto:mdavies@emporia.edu)

#### Paul Rillema, *Councilor* (2011 - 2013)

Department of Chemistry  
Wichita State University  
Wichita, KS 67260-0051  
316-978-3732  
[paul.rillema@wichita.edu](mailto:paul.rillema@wichita.edu)

#### Tom Wiese, *Alternate Councilor* (2011 - 2013)

Fort Hays State University  
[twiese@fhsu.edu](mailto:twiese@fhsu.edu)

### Executive Committee Members

#### Jim Bann, *Immediate Past Chair*

Wichita State University  
[jim.bann@wichita.edu](mailto:jim.bann@wichita.edu)

#### Robin Jackson

Central Christian College  
[robin.jackson@centralchristian.edu](mailto:robin.jackson@centralchristian.edu)

#### Stephen Donnelly, *Newsletter Editor*

Fort Hays State University  
[sdonnell@fhsu.edu](mailto:sdonnell@fhsu.edu)

#### Alan Oberley

Newman University  
[oberleya@newmanu.edu](mailto:oberleya@newmanu.edu)

#### Eric Trump, *Webmaster*

Emporia State University  
[etrump@emporia.edu](mailto:etrump@emporia.edu)

#### Tom Wiese

Fort Hays State University  
[twiese@fhsu.edu](mailto:twiese@fhsu.edu)